

*TM11-6625-246-40P

DEPARTMENT OF THE ARMY TECHNICAL MANUAL

**GENERAL SUPPORT MAINTENANCE REPAIR PARTS AND
SPECIAL TOOLS LISTS (INCLUDING DEPOT MAINTENANCE
REPAIR PARTS AND SPECIAL TOOLS)
TEST SET, RADIO AN/URM-94
FSN 6625-543-1364**

Headquarters, Department of the Army, Washington, D.C.
31 July 1973

Current as of January 1973

| | Paragraph | Page |
|--|-----------|------|
| SECTION I. INTRODUCTION | | |
| Scope | 1-1 | 2 |
| General | 1-2 | 2 |
| Explanation of columns | 1-3 | 2 |
| Special Information | 1-4 | 4 |
| Location of repair parts | 1-5 | 4 |
| Abbreviations (Not applicable) | 1-6 | 4 |
| Reporting of equipment publication improvements | 1-7 | 5 |
| II. REPAIR PARTS LIST | | |
| III. SPECIAL TOOLS, TEST AND SUPPORT EQUIPMENT | | 13 |
| IV. INDEX - FEDERAL STOCK NUMBER AND REFERENCE NUMBER CROSS-REFERENCE TO FIGURE AND ITEM NUMBER | | 14 |

* This manual supersedes TM 11-6625-246-40P, 17 August 1961, including all changes.

SECTION I

INTRODUCTION

1-1. Scope

This manual lists repair parts and special tools required for the performance of general support and depot maintenance of the AN/URM-94. The PCCN for the AN/URM-94 is GCMABL for all models.

NOTE

No parts authorized for stockage at direct support.

1-2. General

This repair parts and special tools list is divided into the following sections:

a. Repair Parts List-Section II. A list of repair parts authorized for the performance of maintenance at the general support and depot level. This repair parts list is arranged in alphabetical order.

b. Special Tools, Test and Support Equipment--Section III. A list of special tools, test and support equipment authorized for the performance of maintenance at the general support and depot level.

c. Index--Federal Stock Number and Reference Number Cross-Reference to Figure and Item Number--Section IV. A list in ascending numerical sequence, of all reference numbers appearing in the listing. Federal stock number and Reference numbers are cross-referenced to each illustration figure and item number or reference designation appearance.

1-3. Explanation of Columns

The following provides an explanation of columns found in the tabular list.

a. Source, Maintenance, and Recoverability Codes (SMR).

(1) *Source code.* Indicates the manner of acquiring support items for maintenance, repair, or overhaul of end items. Source codes are—

| Code | Explanation |
|------|-------------|
|------|-------------|

PA— Item procured and stocked for anticipated or known usage.

PB— Item procured and stocked for insurance purposes because essentiality dictates that a minimum quantity be available in the supply systems.

PC— Item procured and stocked and which otherwise would be coded PA except that it is deteriorative in nature.

PD— Support item, excluding support equipment, procured for initial issue or outfitting and stocked only for subsequent or additional initial issues or outfittings. Not subject to automatic replenishment.

PE— Support equipment procured and stocked for initial issue or outfitting to specified maintenance repair activities.

PF— Support equipment which will not be stocked but which will be centrally procured on demand.

PG-- Item procured and stocked to provide for sustained support for the life of the equipment. It is applied to an item peculiar to the equipment which because of probable discontinuance or shut-down of production facilities would prove uneconomical to reproduce at a later time.

KD— An item of depot overhaul/repair kit and not purchased separately. Depot kit defined as a kit that provides items required at the time of overhaul or repair.

KF— An item of a maintenance kit and not purchased separately. Maintenance kit defined as a kit that provides an item that can be replaced at organizational or direct support or general support levels of maintenance.

KB— Item included in both a depot overhaul/repair kit and a maintenance kit.

MO— Item to be manufactured or fabricated at organizational level.

MF— Item to be manufactured or fabricated at direct support maintenance level.

MH— Item to be manufactured or fabricated at general support maintenance level.

MD— Item to be manufactured or fabricated at depot maintenance level.

AO— Item to be assembled at organizational level.

AH— Item to be assembled at direct support maintenance level.

AF— Item to be assembled at general support maintenance level.

AD— Item to be assembled at depot maintenance level.

XA— Item is not procured or stocked because the requirements for the item will result in the replacement of the next h₁ or assembly.

XB— Item is not procured or stocked. If not available through salvage, requisition.

XC— Installation drawing, diagram instruction sheet, field service drawing, that is iden-

ified by manufacturers' part number.
XD—Support items can be requisitioned with justification.

NOTE

Cannibalization or salvage may be used as a source of supply for any items source coded above except those coded XA and aircraft support items as restricted by AR 700-42.

(2) **Maintenance code.** Maintenance codes are assigned to indicate the levels of maintenance authorized to USE and REPAIR support items. The maintenance codes are entered in the third and fourth positions of the Uniform SMR Code Format as follows-

(a) **Use (third position).** The maintenance code entered in the third position indicates the lowest maintenance level authorized to remove, replace, and use the support item. The maintenance code entered in the third position indicates one of the following levels of maintenance.

| Code | <i>Application/Explanation</i> |
|------|---|
| O - | Support item is removed, replaced, used at the organizational level of maintenance. |

NOTE

A code "C" may be used in this position to denote crew or operator maintenance performed within organizational maintenance.

- F - Support item is removed, replaced, used at the direct support maintenance level.
- H - Support item is removed, replaced, used at the general support maintenance.
- D- Support items that are removed, replaced, used at depot only.

(b) **Repair (fourth position).** The maintenance code entered in the fourth position indicates whether the item is to be repaired and identifies the lowest maintenance level with the capability to perform complete repair (i.e., all authorized maintenance functions). When a maintenance code is not used a dash (-) sign is entered. For multi-service equipment/systems or when a code is entered, this position will contain one of the following maintenance codes as assigned by the service(s) that require the code-

| Code | <i>Application/Explanation</i> |
|------|--|
| O - | The lowest maintenance level capable of complete repair of the support item is the |

| Code | <i>Application/Explanation</i> |
|------|---|
| | organizational level. |
| F - | The lowest maintenance level capable of complete repair of the support item is direct support. |
| H - | The lowest maintenance level capable of complete repair of the support item is general support. |
| D - | The lowest maintenance level capable of complete repair of the support item is the depot level. |
| L- | Repair restricted to designated Specialized Repair Activity. |
| Z - | Non-repairable. No repair is authorized. |
| EL | No repair is authorized. The item may be reconditioned by adjusting, lubricating, etc., at the user level. No parts or special tools are procured for the maintenance of this item. |

(3) **Recoverability code.** Recoverability codes are assigned to support items to indicate the disposition action on unserviceable items. The recoverability code is entered in the fifth position of the uniform SMR Code Format as follows--

| Co& | <i>Explanation</i> |
|-----|---|
| z - | Nonrepairable item. When unserviceable, condemn and dispose at the level indicated in the first digit of the maintenance code. |
| O - | Repairable item. When uneconomically repairable, condemn and dispose at the organizational level. |
| F - | Repairable item. When uneconomically repairable, condemn and dispose at the direct support level. |
| H- | Repairable item. When uneconomically repairable, condemn and dispose at the general support level. |
| D- | Repairable item. When beyond lower level repair capability, return to depot. Condemnation and disposal not authorized below depot level. |
| I- | Repairable item. Repair, condemnation, and disposal not authorized below depot/Specialized Repair Activity level. |
| A - | Item requires special handling or condemnation procedures because of specific reasons (i.e., precious metal content, high dollar value, critical material or hazardous material). |

b. Federal Stock Number. Indicates the Federal stock number assigned to the item and will be used for requisitioning purposes.

c. Description. Indicates the Federal item name and a minimum description required to identify the

item. The last line indicates the reference number followed by the applicable Federal Supply Code for Manufacturer (FSCM) in parentheses. The FSCM is used as an element in item identification to designate manufacturer or distributor or Government agency, etc., and is identified in SB 708-42.

d. Unit of Measure (U/M). Indicates the standard or basic quantity by which the listed item is used in performing the actual maintenance function. This measure is expressed by a two-character alphabetical abbreviation; e.g., ea, in, pr, etc., and is the basis used to indicate quantities and allowances in subsequent columns. When the unit of measure differs from the unit of issue, the lowest unit of issue that will satisfy the required units of measure will be requisitioned.

e. Quantity Incorporated in Unit. This column indicates the quantity of the item used in the equipment. Subsequent appearances of the same item in the same assembly are indicated by the letters "REF".

f: 30-Day DS/GS Maintenance Allowances.

NOTE

Allowances in GS column are for GS maintenance only.

(1) The repair part, indicated by asterisk entries in separate allowance columns for GS represent those authorized for use at that category of maintenance to be requisitioned on an "as required" basis, until stockage is based on demand in accordance with AR 710-2.

(2) Allowance quantities are indicated in the special tool lists section for special tools, TMDE, and other support equipment.

g. 1- Year Allowances Per 100 Equipments/Contingency Planning Purposes. Column intentionally left blank.

h Depot Maintenance Allowance Per 100 Equipments. This column indicates opposite the first appearance of each item the total quantity authorized for depot maintenance of 100 equipments.

i. Illustration. This column is divided as follows:

(1) **Figure number.** Indicates the figure number of the illustration on which the item is shown in TM

(2) **Item number.** Indicates the item number or reference designation used to reference the item in the illustration.

1 - 4 . S p e c i a l i n f o r m a t i o n

a. Usable on codes are included in column 3. **Uncoded** items are applicable to all models. identification of the usable on codes used in this publication are—

Code
AFU

Used on
AN/URM-94

b. The basis of issue or authorized special tools, test and support equipment is the number of end items of equipment supported and the number of maintenance personnel allocated to perform the required maintenance operations.

c. The following publications pertain to the AN/URM-94 and its component

| | |
|--------------------|---|
| TM 11 -6625-246-12 | Operator and Organizational Maintenance Manual: Test Set, Radio AN/URM-94. |
| TM 11-6625-246-20P | Organizational Maintenance Repair Parts and Special Tools Lists: Test Set, Radio AN/URM-94. |
| TM 11-6625-246-45 | GS and Depot Maintenance Manual: Test Set Radio AN/URM-94. |

1-5. Location of Repair Parts

a. This manual contains one cross-reference index (sec IV) to be used to locate a repair part when either the Federal stock number or reference number (manufacturer's part number) is known. The first column in the index is prepared in numerical or alphanumeric sequence in ascending order. The reference numbers (manufacturer's part numbers) are listed immediately following the last listed Federal stock number in the index of Federal stock numbers.

b. When the Federal stock number or reference number is known, follow the procedure given in (1) and (2) below.

(1) Refer to the index of Federal stock numbers (sec IV) and locate the Federal stock number or reference number. The FSN and reference number are cross-referenced to the applicable figure and item number or reference designation.

(2) Refer to the repair parts list (sec II) and locate the figure number (col 10a) and item number or reference designation (col 10b) as noted in the FSN index.

c. When the figure and item number or reference designation are known, scrutinize columns 10a and 10b of the repair parts list (sec II) until the item is located.

d. When the FSN, reference number, figure number, item number and reference designation are not known, scrutinize column 3 of the repair parts list (sec II), which is arranged in alphabetical order.

1-6. Abbreviations

Not applicable.

1-7. Reporting of Equipment Publication Improvements

The reporting of errors, omissions, and recommendations for improving this publication by the in-

dividual user is encouraged. Reports should be submitted on DA Form 2028 (Recommended Changes to Publications) and forwarded direct to Commander, US Army Electronics Command, ATTN: AMSEL MA-CW, Fort Monmouth, NJ 07763.

SECTION II

TM11-6625-246-40P

| (1) SMR CODE | (2) FEDERAL STOCK NUMBER | (3) DESCRIPTION REFERENCE NUMBER & MFR. CODE USABLE ON CODE | | (4) UNIT OF MEAS | (5) QTY INC IN UNIT | (6) 30-DAY GS MAINT ALLOWANCE | | | (7) 30-DAY GS MAINT ALLOWANCE | | | (8) 1-YR ALW PER 100 EQUIP CNTGCV | (9) DEPOT MAINT ALW PER 100 EQUIP | (10) ILLUSTRATION | |
|--------------------|-----------------------------------|--|--|---------------------------|---------------------------------|-------------------------------------|-------|--------|-------------------------------------|-------|--------|--|--|----------------------|-------------|
| | | | | | | (a) | (b) | (c) | (a) | (b) | (c) | | | (a) | (b) |
| | | | | | | 1-20 | 21-50 | 51-100 | 1-20 | 21-50 | 51-100 | | | FIGURE NO. | ITEM NO. |
| PAZZZ | 6625-678-4330 | GROUP 0001 TEST SET,RADIO AN/URM-94 ANTENNA AT-807/URM-94 E6 TELESCOPIC 3 SECT 25 TO 50 MC RANGE 152TO 174 MC RANGE PLUG MOUNTED C3040B136 (81223) | | EA | 1 | | | | * | * | * | | 3 | 1 | E6 |
| PAOZZ | 6625-608-1809 | BAG, CARRYING MP21 CANVAS ZIPPER TYPE .. 13 X 12 3-4 X 7 IN 7652CRD (15914) | | EA | 1 | | | | * | * | * | | 3 | 1 | MP21 |
| PAHZZ | 6145-578-6370 | CABLE, POWER, ELECTRICAL NO-REF-DESIG.... COPPER STRANDED 4 FT LG O-A 8898 (70903) | | FT | 4 | | | | * | * | * | | 40 | | |
| PAHZZ | 6145-542-6092 | CABLE, RADIO FREQUENCY NO-REF-DESIG RG-.. 58/U RG50U (80058) | | EA | 4 | | | | * | * | * | | 5 | | |
| PAHZZ | 5940-204-5206 | CLIP, ELECTRICAL E3 ALLIGATOR TYPE 3- 8 X 2 X 5-16 IN 60CS (76545) | | EA | 2 | | | | * | * | * | | 3 | | E3 |
| PAHZZ | 5940-204-5206 | CLIP, ELECTRICAL E18 ALLIGATOR TYPE 3- 8 X 2 X 5-16 IN 60CS (76545) | | EA | REF | | | | * | * | * | | 3 | | E18 |
| PAHZZ | 5935-149-4066 | CONNECTOR, PLUG, ELECTRICAL UG-88C/U P5 UG88CU (80058) | | EA | 2 | | | | * | * | * | | 3 | | P5 |
| PAHZZ | 5935-149-4066 | CONNECTOR, PLUG, ELECTRICAL UG-88C/U P6 UG88CU (80058) | | EA | REF | | | | * | * | * | | 3 | | P6 |
| PAHZZ | 5935-283-3392 | CONNECTOR, PLUG, ELECTRICAL P1..... STRAIGHT 2 CONT 1-17-32 X 23-32 X 3-4 IN 921 (97539) | | EA | 1 | | | | * | * | * | | 3 | | P1 |
| PAHZZ | 5935-2001-8368 | CONNECTOR, PLUG, ELECTRICAL P3..... STRAIGHT 8 CONT 2 IN LG X 1 11-32 IN DIA AN3106A18-8S (02660) | | EA | 2 | | | | * | * | * | | 3 | | P3 |
| PAHZZ | 5935-201-8368 | CONNECTOR, PLUG, ELECTRICAL P4..... STRAIGHT 8 CONT 2 IN LG X 1 11-32 IN DIA AN3106A18-8S (02660) | | EA | REF | | | | * | * | * | | 3 | | P4 |
| PAHZZ | 5935-324-8792 | CONNECTOR, PLUG, ELECTRICAL P2..... STRAIGHT 14 CONT 1-1-4 X 7-16 X 3-8 IN 14-20P (28281) | | EA | 1 | | | | * | * | * | | 3 | | P2 |
| PAHZZ | 59385-666-4860 | GROUP 0002 TEST SET,RADIO TS-970/U ADAPTER, CABLE TO CONNECTOR MP16..... METALLIC 1-1-8 IN LG X 1-3-16 IN DIA O-A AN3057-6 (02660) | | EA | 2 | | | | * | * | * | | 4 | | MP16 |
| PAHZZ | 5123-333-9809 | ALIGNMENT, TOOL, ELECTRONIC EQUIPMENT..... MPI4 2 WORKING ENDS SCDR END RECESSED BLADE WRENCH END, RECTANGULAR SOCKET 6 IN LG O-A 488 (98427) | | EA | 1 | | | | * | * | * | | 5 | 1 | MP14 |
| PAHZZ | 5120-607-0254 | ALIGNMENT TOOL MP13 1 WORKING END RECTANGULAR SOCKET 4 7-8 IN LG O-A 717A (98427) | | EA | 1 | | | | * | * | * | | 5 | 1 | MP13 |
| PAOZZ | 5340-598-6284 | BUMPER, RUBBER H7 5-8 IN OD X 5-16 IN. H O-A BLACK 868-2 (70485) | | EA | 4 | | | | * | * | * | | 10 | | H7 |

SECTION II

TM11-6625-246-40P

| (1) SMK CODE | (2) FEDERAL STOCK NUMBER | (3) DESCRIPTION REFERENCE NUMBER & MFR. CODE USABLE ON CODE | | (4) UNIT OF MEAS | (5) QTY INC IN UNIT | (6) 30-DAY DS MAINT ALLOWANCE | | | (7) 30-DAY GS MAINT ALLOWANCE | | | (8) 1-YR ALW PER 100 EQUIP CNTGCT | (9) DEPOT MAINT ALW PER 100 EQUIP | (10) ILLUSTRATION | |
|--------------------|-----------------------------------|--|--|---------------------------|---------------------------------|-------------------------------------|-------|--------|-------------------------------------|-------|--------|--|--|----------------------|-------------|
| | | | | | | (a) | (b) | (c) | (a) | (b) | (c) | | | (a) | (b) |
| | | | | | | 1-20 | 21-50 | 51-100 | 1-20 | 21-50 | 51-100 | | | FIGURE NO. | ITEM NO. |
| PACZZ | 5340-291-3650 | BUMPER, RUBBER H9 BLACK 3-4 IN OD X.. 9-16 IN H O-A 19 (70485) | | EA | 4 | | | | * | * | * | | 10 | | H9 |
| PAHZZ | 6625-605-7197 | BUSHING, SLEEVE H18 BRASS 0-192 IN ID. X 0-250 IN LG C3318B1002A (81223) | | EA | 1 | | | | * | * | * | | 3 | | H18 |
| PAHZZ | 5975-273-0788 | BUSHING, STRAIN RELIEF, CABLE MP3..... PHENOLIC 0-127 IN THK X 0-687 IN LG O-A SR6P1 (28520) | | EA | 1 | | | | * | * | * | | 3 | | MP3 |
| PAHZZ | 5975-351-6114 | BUSHING, STRAIN RELIEF, CABLE MP4..... PHENOLIC 0-127 IN THK X 0-668 IN LG O-A SR5P1 (28520) | | EA | 1 | | | | * | * | * | | 3 | | MP4 |
| PAHZZ | 5975-578-2864 | BUSHING, STRAIN RELIEF, CABLE MP5..... PHENOLIC 0-127 IN THK X 0-406 IN LG O-A SR3P1 (28520) | | EA | 1 | | | | * | * | * | | 3 | | MP5 |
| PAOZZ | 5920-578-2844 | CAP. ELECTRICAL E18 PLASTIC WITH BRASS. INSERT 1 1-32 IN LG X 1-2 IN DIA 372001SA2 (75915) | | EA | 1 | | | | * | * | * | | 3 | | E18 |
| PAHZZ | 5910-583-4891 | CAPACITOR, FIXED, CERAMIC DIELECTRIC C7 22 UUF PORM5PCT CC20CH220J (81349) | | EA | 1 | | | | * | * | * | | 5 | 9 | C7 |
| PAHZZ | 5910-583-4099 | CAPACITOR, FIXED, ELECTROLYTIC C14 2... SFCT, 30 UF EA SECT 250 VDCW C142C300M (81349) | | EA | 1 | | | | * | * | * | | 3 | 9 | C14 |
| PAHZZ | 5910-112-7908 | CAPACITOR, FIXED, CERAMIC DIELECTRIC C4 47 UUF PORM5PCT CC30CH470J (81349) | | EA | 1 | | | | * | * | * | | 5 | 9 | C4 |
| PAHZZ | 5910-276-6835 | CAPACITOR, FIXED, MICA DIELECTRIC C5... 100 UUF PORM5PCT 500 VDCW CM15C101J (81349) | | EA | 2 | | | | * | * | * | | 3 | 9 | C5 |
| PAHZZ | 5910-276-6835 | CAPACITOR, FIXED, MICA DIELECTRIC C8... 100 UUF PORM5PCT 500 VDCW CM15C101J (81349) | | EA | REF | | | | * | * | * | | 3 | 10 | C8 |
| PAHZZ | 5910-823-1068 | CAPACITOR, FIXED, CERAMIC DIELECTRIC C1 4700 UUF PORM20PCT CK62AW472M (81349) | | EA | 2 | | | | * | * | * | | 5 | 10 | C1 |
| PAHZZ | 5913-823-1368 | CAPACITOR, FIXED, CERAMIC DIELECTRIC C11 4700 UUF PORM20PCT CK62AW472M (81349) | | EA | REF | | | | * | * | * | | 5 | 9 | C11 |
| PAHZZ | 3910-822-5683 | CAPACITOR, FIXED, CERAMIC DIELECTRIC C2 10,000 UUF 500 VDCW CK63AW103M (81349) | | EA | 4 | | | | * | * | * | | 5 | 9 | C2 |
| PAHZZ | 5913-822-5683 | CAPACITOR, FIXED, CERAMIC DIELECTRIC C3 10,000 UUF 500 VDCW CK63AW103M (81349) | | EA | REF | | | | * | * | * | | 5 | 10 | C3 |
| PAHZZ | 5910-822-5683 | CAPACITOR, FIXED, CERAMIC DIELECTRIC C9 10,000 UUF 500 VDCW CK63AW103M (81349) | | EA | REF | | | | * | * | * | | 5 | 10 | C9 |
| PAHZZ | 5910-822-5683 | CAPACITOR, FIXED, CERAMIC DIELECTRIC C13 10,000 UUF 500 VDCW CK63AW103M (81349) | | EA | REF | | | | * | * | * | | 5 | 10 | C13 |
| | 5910-667-7062 | CAPACITOR, FIXED, PAPER DIELECTRIC C12... CONTINUED | | EA | 1 | | | | * | * | * | | 3 | 10 | C12 |

SECTION II

TM11-6625-246-40P

| (1) SMR CODE | (2) FEDERAL STOCK NUMBER | (3) DESCRIPTION REFERENCE NUMBER & MFR. CODE USABLE ON CODE | | (4) UNIT OF MEAS | (5) QTY INC IN UNIT | (6) 30-DAY DS MAINT ALLOWANCE | | | (7) 30-DAY GS MAINT ALLOWANCE | | | (8) 1-YR ALW PER 100 EQUIP CNTGCT | (9) DEPOT MAINT ALW PER 100 EQUIP | (10) ILLUSTRATION | | |
|--------------------|-----------------------------------|--|----------------|---------------------------|---------------------------------|-------------------------------------|-------|--------|-------------------------------------|-------|--------|--|--|----------------------|------------|--|
| | | | | | | (a) | (b) | (c) | (a) | (b) | (c) | | | (a) | (b) | |
| | | | | | | 1-20 | 21-50 | 51-100 | 1-20 | 21-50 | 51-100 | | | FIGURE NO. | ITEM NO | |
| | | CONTINUED | | | | | | | | | | | | | | |
| PAHZZ | 5910-823-1068 | CAPACITOR, FIXED, CERAMIC DIELECTRIC | C11 | EA | REF | | | | * | * | * | | 5 | 9 | C11 | |
| | | CPO5A1EC104K (81349) | | | | | | | | | | | | | | |
| PAHZZ | 5910-578-5542 | CAPACITOR, VARIABLE, AIR DIELECTRIC | C6. | EA | 1 | | | | * | * | * | | 2 | 10 | C6 | |
| | | 1-7 TO 8-7 UUF, 800 VAC PLATE MESHING | | | | | | | | | | | | | | |
| | | TYPE 1 1-4 X 5-8 X 3-4 IN | | | | | | | | | | | | | | |
| | | 9M11 (7497G) | | | | | | | | | | | | | | |
| PAHZZ | 5340-205-5159 | CATCH, LUGGAGE NO-REF-DESIG | STEEL 2 X 1 | EA | 5 | | | | * | * | * | | 3 | | | |
| | | 3-8 X 35-64 IN | | | | | | | | | | | | | | |
| | | WX7336 (26954) | | | | | | | | | | | | | | |
| PAHZZ | 5940-244-5745 | CLAMP, LOOP MP9 PLASTIC | 0-5 4 X 0-062. | EA | 1 | | | | * | * | * | | 3 | | MP9 | |
| | | IN THK | | | | | | | | | | | | | | |
| | | CPC1949-6 (71616) | | | | | | | | | | | | | | |
| PAHZZ | 5940-263-1056 | CLIP, ELECTRICAL MP11 FAHNESTOCK TYPE | 1 | EA | 1 | | | | * | * | * | | 3 | | MP11 | |
| | | X 3-8 IN | | | | | | | | | | | | | | |
| | | 3C (72307) | | | | | | | | | | | | | | |
| PAHZZ | 5340-579-7698 | CLIP, SPRING TENSION NO-REF-DESIG..... | | EA | 2 | | | | * | * | * | | 3 | | | |
| | | COPPER 0.250 IN LG X 0.874 IN W X 0.010 | | | | | | | | | | | | | | |
| | | THK | | | | | | | | | | | | | | |
| | | C3040BB148 (80211) | | | | | | | | | | | | | | |
| PAHZZ | 5950-578-1462 | COIL, RADIO FREQUENCY L1 24 TURNS OF.. | | EA | 4 | | | | * | * | * | | 3 | 9 | L1 | |
| | | NO. 26 AWG WIRE 7-32 IN DIA X5-8 IN LG | | | | | | | | | | | | | | |
| | | C3040BB145 (81223) | | | | | | | | | | | | | | |
| PAHZZ | 5950-578-1462 | COIL, RADIO FREQUENCY L2 24 TURNS OF.. | | EA | REF | | | | * | * | * | | 3 | 9 | L2 | |
| | | NO. 26 AWG WIRE 7-32 IN DIA X5-8 IN LG | | | | | | | | | | | | | | |
| | | C3040BB145 (81223) | | | | | | | | | | | | | | |
| PAHZZ | 5950-578-1462 | COIL, RADIO FREQUENCY L3 24 TURNS OF.. | | EA | REF | | | | * | * | * | | 3 | 10 | L3 | |
| | | NO. 26 AWG WIRE 7-32 IN DIA X5-8 IN LG | | | | | | | | | | | | | | |
| | | C3040BB145 (81223) | | | | | | | | | | | | | | |
| PAHZZ | 5950-578-1462 | COIL, RADIO FREQUENCY L4 24 TURNS OF.. | | EA | REF | | | | * | * | * | | 3 | | L4 | |
| | | NO. 26 AWG WIRE 7-32 IN DIA X5-8 IN LG | | | | | | | | | | | | | | |
| | | C3040BB145 (81223) | | | | | | | | | | | | | | |
| PAHZZ | 6625-605-7196 | COLLET, CABLE H9 CABLE RETAINER | | EA | 2 | | | | * | * | * | | 2 | | H9 | |
| | | STEEL 3-8 IN LG X 1-2 IN DIA | | | | | | | | | | | | | | |
| | | C3040BB138 (81223) | | | | | | | | | | | | | | |
| PAHZZ | 6625-605-7196 | COLLET, CABLE H11 CABLE RETAINER | | EA | REF | | | | * | * | * | | 2 | | H11 | |
| | | STEEL 3-8 IN LG X 1-2 IN DIA | | | | | | | | | | | | | | |
| | | C3040BB138 (81223) | | | | | | | | | | | | | | |
| | 5935-236-8252 | CONNECTOR, RECEPTACLE, ELECTRICAL | J3... | EA | 1 | | | | * | * | * | | 3 | 10 | J3 | |
| | | STRAIGHT & CONT 1 11-32 X 1 3-8 X 1 3-8 | | | | | | | | | | | | | | |
| | | IN | | | | | | | | | | | | | | |
| | | AN3102A18-8P (02660) | | | | | | | | | | | | | | |
| | 5935-201-5983 | CONNECTOR, RECEPTACLE, ELECTRICAL | J1... | EA | 1 | | | | * | * | * | | 3 | 10 | J1 | |
| | | UG291B (80058) | | | | | | | | | | | | | | |
| | 5935-201-3511 | CONNECTOR, RECEPTACLE, ELECTRICAL | J2... | EA | 1 | | | | * | * | * | | 3 | 10 | J2 | |
| | | UG290AU (80058) | | | | | | | | | | | | | | |
| | 5960-188-3551 | ELECTRON TUBE V2..... | | EA | 1 | | | | * | * | * | | 100 | 10 | V2 | |
| | | 6AK6 (99813) | | | | | | | | | | | | | | |
| | 5960-166-7663 | ELECTRON TUBE V1..... | | EA | 1 | | | | * | * | * | | 100 | 10 | V1 | |
| | | 12AU7 (99813) | | | | | | | | | | | | | | |
| | 5920-578-2837 | FUSE, CARTRIDGE F1 1-200 AMP, 250 V 1 | | EA | 1 | | | | * | * | * | | 50 | 10 | F1 | |
| | | IN LG X 1-4 IN DIA | | | | | | | | | | | | | | |
| | | 8AG1-200 (71400) | | | | | | | | | | | | | | |

SECTION II

TM11-6625-246-40P

| (1) SMR CODE | (2) FEDERAL STOCK NUMBER | (3) DESCRIPTION REFERENCE NUMBER & MFR CODE USABLE ON CODE | (4) UNIT OF MEAS | (5) QTY INC IN UNIT | (6) 30-DAY DS MAINT ALLOWANCE | | | (7) 30-DAY GS MAINT ALLOWANCE | | | (8) 1-YR ALW PER 100 EQUIP CNTGCY | (9) DEPOT MAINLY ALW PER 100 EQUIP | (10) ILLUSTRATION | |
|--------------------|-----------------------------------|--|---------------------------|---------------------------------|-------------------------------------|-------|--------|-------------------------------------|-------|--------|--|---|----------------------|------------|
| | | | | | (a) | (b) | (c) | (a) | (b) | (c) | | | (a) | (b) |
| | | | | | 1-20 | 21-50 | 51-100 | 1-20 | 21-50 | 51-100 | | | FIGURE NO | ITEM NO |
| PAHZZ | 5920-156-9230 | FUSEHOLDER XF1 EXTRACTOR POST TYPE 250 V, 15 AMP 1 IN LG X 1-4 IN DIA 372001 (759151) | EA | 1 | | | | * | * | * | | 3 | | XF1 |
| PAHZZ | 6625-579-2304 | GASKET MFI RUBBER 11 1-2 IN LG X 10 7- 8 IN W X 1-4 IN THK 0-A C3040BB113 (81223) | EA | 1 | | | | * | * | * | | 5 | | MD1 |
| PAHZZ | 5355-579-2315 | KNOB H3 SETSCREW TYPE ZINC, OLIVE.... DRAB, 3-4 IN LGX 5-8 IN OD C3040BA1000-1 (81223) | EA | 2 | | | | * | * | * | | 3 | 1 | H3 |
| PAHZZ | 5355-579-2315 | KNOB H4 SETSCREW TYPE ZINC, OLIVE.... DRAB, 3-4 IN LGX 5-8 IN OD C3040BA1000-1 (81223) | EA | REF | | | | * | * | * | | 3 | 1 | H4 |
| PAHZZ | 5355-579-2314 | KNOB H5 SETSCREW TYPE ZINC, OLIVE.... DRAB 7-8 IN LGX 1 1-8 IN OD C3040BA1000-2 (81223) | EA | 1 | | | | * | * | * | | 3 | 1 | H5 |
| PAHZZ | 5355-582-2766 | KNOB H2 SETSCREW TYPE ZINC, OLIVE.... DRAB 59-64 IN DIA X 21-32 IN H C3040BA1000-3 (81223) | EA | 1 | | | | * | * | * | | 3 | 1 | H2 |
| PAHZZ | 6145-548-2742 | LEAD, ELECTRICAL NO-REF-DESIG COPPER ... NO. 18 AWG, BLACK 4 FT LG 8898 (70902) | FT | 4 | | | | * | * | * | | 12 | 1 | |
| PAHZZ | 6625-578-5517 | LEAD, TEST E12 2 CONDUCTOR 1 PLUG ONE. END, OTHER END TINNED 49 1-2 IN LG 0-A C3040BB101A (81223) | FT | 1 | | | | * | * | * | | 3 | 1 | E12 |
| PAHZZ | 6625-519-2411 | MULTIMETER, REPLACEMENT M1 3 SCALES, 0 TO 3-5-10 RANGES MA AND V 50 MA FULL SCALE DEFLECTION 2000 OHM INT RES 4 21- 32 IN LG X 2 3-4 IN DIA 29 (55026) | EA | 1 | | | | * | * | * | | 3 | 9 | M1 |
| PAHZZ | 6625-605-7226 | PLUG, TIP E4 SMALL THERMO TIP CONT.... ELEMENT UNINSULATED 1 5-16 IN LG 0-A C3040BB163 (81223) | EA | 2 | | | | * | * | * | | 1 | | E4 |
| PAHZZ | 6625-605-7226 | PLUG, TIP E5 SMALL THERMO TIP CONT.... ELEMENT UNINSULATED 1 5-16 IN LG 0-A C3040BB163 (81223) | EA | REF | | | | * | * | * | | 1 | | E5 |
| PAHZZ | 6625-331-1741 | PROD, TEST E7 REPLACEABLE TIP, HANDLE, BLACK PHENOLIC 5-1R7 IN LG X 0-375 IN DIA 0-A MODIFIED 387B (11242) | EA | 1 | | | | * | * | * | | 5 | 1 | E7 |
| PAHZZ | 5905-800-8030 | RESISTOR, FIXED, FILM R8 2-5 OHM..... PORM1PCT 1 W RM59G2R5 (81349) | EA | 1 | | | | * | * | * | | 3 | 10 | R8 |
| PAHZZ | 5905-252-4018 | RESISTOR, FIXED, COMPOSITION R23 47 OHM PORM5PCT 1-2 W RC20GF470J (81349) | EA | 1 | | | | * | * | * | | 3 | 9 | R23 |
| PAHZZ | 5935-256-0409 | RESISTOR, FIXED, COMPOSITION R31 220... OHM PORM10PCT 1-2 W RC20GF221K (81349) | EA | 1 | | | | * | * | * | | 3 | 10 | R31 |
| PAHZZ | 5905-279-2603 | RESISTOR, FIXED, COMPOSITION R34 470... OHM PORM10PCT 1 W RC32GF471K (81349) | EA | 2 | | | | * | * | * | | 3 | 9 | R34 |
| PAHZZ | 5905-279-2603 | RESISTOR, FIXED, COMPOSITION R35 470... CONTINUED | EA | REF | | | | * | * | * | | 3 | | R35 |

SECTION II

TM11-6625-246-40P

| (1) WFR CODE | (2) FEDERAL STOCK NUMBER | (3) DESCRIPTION REFERENCE NUMBER & WFR CODE USABLE ON CODE | | (4) UNIT OF MEAS | (5) QTY INC IN UNIT | (6) 30-DAY DS MAINT ALLOWANCE | | | (7) 30-DAY GS MAINT ALLOWANCE | | | (8) 1-YR ALM PER 100 EQUIP CNTGCT | (9) DEPOT MAINT ALM PER 100 EQUIP | (10) ILLUSTRATION | | |
|--------------------|-----------------------------------|---|----------------------------|---------------------------|---------------------------------|-------------------------------------|-------|--------|-------------------------------------|-------|--------|--|--|----------------------|------------|--|
| | | | | | | (a) | (b) | (c) | (a) | (b) | (c) | | | (a) | (b) | |
| | | | | | | 1-20 | 21-50 | 51-100 | 1-20 | 21-50 | 51-100 | | | FIGURE NO | ITEM NO | |
| | | CONTINUED | | | | | | | | | | | | | | |
| PAHZZ | 5905-817-5636 | BLACK PHENYLIC | 5-187 IN LG X 0-375 IN DIA | EA | 2 | | | | * | * | * | | 3 | 9 | R19 | |
| | | RC32GF471K (81349) | | | | | | | | | | | | | | |
| | | RESISTOR, FIXED, COMPOSITION | R19 1000.. | | | | | | | | | | | | | |
| | | OHM PORMIPCT 1-2 W | | | | | | | | | | | | | | |
| PAHZZ | 5905-817-5636 | RC20GF102K (81349) | | EA | REF | | | | * | * | * | | 3 | 10 | R24 | |
| | | RESISTOR, FIXED, COMPOSITION | R24 1000.. | | | | | | | | | | | | | |
| | | OHM PORMIPCT 1-2 W | | | | | | | | | | | | | | |
| PAHZZ | 5905-279-1723 | RC20GF103K (81349) | | EA | 1 | | | | * | * | * | | 3 | 9 | R20 | |
| | | RESISTOR, FIXED, COMPOSITION | R20 2200.. | | | | | | | | | | | | | |
| | | OHM PORMIPCT 1 W | | | | | | | | | | | | | | |
| PAH | 5905-279-3504 | RC32GF222K (81349) | | EA | 1 | | | | * | * | * | | 3 | 10 | R30 | |
| | | RESISTOR, FIXED, COMPOSITION | R30 4700.. | | | | | | | | | | | | | |
| | | OHM PORMSPCT 1-2 W | | | | | | | | | | | | | | |
| PAHZZ | 5905-859-5897 | RC20GF472J (81349) | | EA | 2 | | | | * | * | * | | 3 | 10 | R17 | |
| | | RESISTOR, FIXED, FILM | R17 6500 OHM.... | | | | | | | | | | | | | |
| | | PORMIPCT 1-2 W 3-4 IN LG X 9-34IN DIA | | | | | | | | | | | | | | |
| PAHZZ | 5905-853-5897 | 06-30095A10 (81223) | | EA | REF | | | | * | * | * | | 3 | 10 | R18 | |
| | | RESISTOR, FIXED, FILM | R18 6500 OHM.... | | | | | | | | | | | | | |
| | | PORMIPCT 1-2 W 3-4 IN LG X 9-34IN DIA | | | | | | | | | | | | | | |
| | | 06-30095A10 (81223) | | | | | | | | | | | | | | |
| PAHZZ | 5905-279-3503 | RESISTOR, FIXED, COMPOSITION | R25 6800.. | EA | 1 | | | | * | * | * | | 3 | 10 | R25 | |
| | | OHM PORMIPCT 1-2 W | | | | | | | | | | | | | | |
| PAHZZ | 5905-185-8510 | RC20GF682K (81349) | | EA | 1 | | | | * | * | * | | 3 | | R26 | |
| | | RESISTOR, FIXED, COMPOSITION | R26 10,000 | | | | | | | | | | | | | |
| | | OHM PORMSPCT 1-2 W | | | | | | | | | | | | | | |
| PAHZZ | 5905-581-1717 | RC20GF103J (81349) | | EA | 2 | | | | * | * | * | | 3 | 10 | R12 | |
| | | RESISTOR, FIXED, FILM | R12 15,000 OHM... | | | | | | | | | | | | | |
| | | PORMIPCT 1 W | | | | | | | | | | | | | | |
| PAHZZ | 5905-581-1717 | RN70B1502F (81349) | | EA | REF | | | | * | * | * | | 3 | 10 | R14 | |
| | | RESISTOR, FIXED, FILM | R14 15,000 OHM... | | | | | | | | | | | | | |
| | | PORMIPCT 1 W | | | | | | | | | | | | | | |
| PAHZZ | 5905-853-5899 | RN70B1502F (81349) | | EA | 1 | | | | * | * | * | | 3 | 10 | R9 | |
| | | RESISTOR, FIXED, FILM | R9 18,000 OHM... | | | | | | | | | | | | | |
| | | PORMIPCT 1-2 W 3-4 IN LG X 9-32 IN DIA | | | | | | | | | | | | | | |
| | | 06-30095A10 (81223) | | | | | | | | | | | | | | |
| PAHZZ | 5935-556-4627 | RESISTOR, FIXED, FILM | R10 20,000 OHM... | EA | 1 | | | | * | * | * | | 3 | 10 | R10 | |
| | | PORMIPCT 1 W | | | | | | | | | | | | | | |
| PAHZZ | 5905-556-4008 | RN70B2002F (81349) | | EA | 1 | | | | * | * | * | | 3 | 10 | R15 | |
| | | RESISTOR, FIXED, FILM | R15 40,200 OHM... | | | | | | | | | | | | | |
| | | PORMIPCT 1-2 W | | | | | | | | | | | | | | |
| PAHZZ | 5905-249-3661 | RN70B4002F (81349) | | EA | 1 | | | | * | * | * | | 3 | 10 | R32 | |
| | | RESISTOR, FIXED, COMPOSITION | R32 68,000 | | | | | | | | | | | | | |
| | | OHM PORMSPCT 1-2 W | | | | | | | | | | | | | | |
| PAHZZ | 5905-552-2442 | RC20GF683J (81349) | | EA | 1 | | | | * | * | * | | 3 | 9 | R33 | |
| | | RESISTOR, FIXED, FILM | R33 100,000 OHM.. | | | | | | | | | | | | | |
| | | PORMIPCT 1 W | | | | | | | | | | | | | | |
| PAHZZ | 5935-646-5706 | RN70B1003F (81349) | | EA | 1 | | | | * | * | * | | 3 | 9 | R7 | |
| | | RESISTOR, FIXED, FILM | R7 200,000 OHM.. | | | | | | | | | | | | | |
| | | PORMIPCT 1 W | | | | | | | | | | | | | | |
| PAHZZ | 5935-221-5860 | RN70B2003F (81349) | | EA | 1 | | | | * | * | * | | 3 | 10 | R21 | |
| | | RESISTOR, FIXED, COMPOSITION | R21 330,... | | | | | | | | | | | | | |
| | | CONTINUED | | | | | | | | | | | | | | |

SECTION II

TM11-6625-246-40P

| (1) SWR CODE | (2) FEDERAL STOCK NUMBER | (3) DESCRIPTION REFERENCE NUMBER & MFR CODE | (4) UNIT OF MEAS | (5) QTY INC IN UNIT | (6) 30-DAY DS MAINT ALLOWANCE | | | (7) 30-DAY GS MAINT ALLOWANCE | | | (8) 1-YR ALN PER 100 EQUIP CNTG | (9) DEPOT MAINT ALN PER 100 EQUIP | (10) ILLUSTRATION | |
|--------------------|-----------------------------------|--|---------------------------|---------------------------------|-------------------------------------|-------|--------|-------------------------------------|-------|--------|--|--|----------------------|------------|
| | | | | | (a) | (b) | (c) | (a) | (b) | (c) | | | (a) | (b) |
| | | | | | 1-20 | 21-50 | 51-100 | 1-20 | 21-50 | 51-100 | | | FIGURE NO | ITEM NO |
| PAHZ | 5905-556-1627 | CONTINUED RESISTOR, FIXED, FILM R10 20,000 OHM... RC20GF334K (81349) | EA | 1 | | | | | | | 3 | 10 | R10 | |
| PAHZ | 5905-185-6946 | RESISTOR, FIXED, COMPOSITION R38 470... 000 OHM PORMLOPCT 1-2 W RC20GF474K (81349) | EA | 1 | | | | | | | 3 | 9 | R38 | |
| PAHZ | 5905-853-5932 | RESISTOR, FIXED, FILM R6 700,000 OHM... PORMLOPCT 1-2 W 3-4 IN LG X 9-32 IN DIA 06-30095A05 (81223) | EA | 1 | | | | | | | 3 | 9 | R6 | |
| PAHZ | 5905-192-0390 | RESISTOR, FIXED, COMPOSITION R1 1 MEG... PORM5PCT 1-2 W RC20GF105J (81349) | EA | 3 | | | | | | | 3 | | R1 | |
| PAHZ | 5905-192-0390 | RESISTOR, FIXED, COMPOSITION R22 1 MEG... PORM5PCT 1-2 W RC20GF105J (81349) | EA | REF | | | | | | | 3 | 9 | R22 | |
| PAHZ | 5905-192-0390 | RESISTOR, FIXED, COMPOSITION R29 1 MEG... PORM5PCT 1-2 W RC20GF105J (81349) | EA | REF | | | | | | | 3 | 9 | R29 | |
| PAHZ | 5905-539-0802 | RESISTOR, FIXED, FILM R5 2 MEG..... PORMLOPCT 1 W RN70B2004F (81349) | EA | 1 | | | | | | | 3 | 9 | R5 | |
| PAHZ | 5905-279-1883 | RESISTOR, FIXED, COMPOSITION R16 3-3... MEG PORMLOPCT 1-2 W RC20GF335K (81349) | EA | 1 | | | | | | | 3 | 10 | R16 | |
| PAHZ | 5905-853-5898 | RESISTOR, FIXED, FILM R4 7 MEG..... PORMLOPCT 1-2 W 3-4 IN LG X 9-32 IN DIA 06-30095A03 (81223) | EA | 1 | | | | | | | 3 | 9 | R4 | |
| PAHZ | 5905-822-3841 | RESISTOR, FIXED, FILM R2 7-27 MEG..... PORMLOPCT 1 W 3-4 IN LG X 9-32 IN DIA 06-30095A02 (81223) | EA | 1 | | | | | | | 3 | 9 | R2 | |
| PAHZ | 5905-853-5933 | RESISTOR, FIXED, FILM R3 10 MEG..... PORMLOPCT 1-2 W 3-4 IN LG X 9-32 IN DIA 06-30095A01 (80211) | EA | 1 | | | | | | | 3 | 9 | R3 | |
| PAHZ | 5905-577-9490 | RESISTOR, VARIABLE R13 5000 OHM..... PORMLOPCT 2 W RV4NAXSD502A (81349) | EA | 1 | | | | | | | 3 | 9 | R13 | |
| PAHZ | 5905-655-4063 | RESISTOR, VARIABLE R11 25,000 OHM..... PORMLOPCT 2 W RV4NAXSD253A (81349) | EA | 1 | | | | | | | 3 | 10 | R11 | |
| PAHZ | 5905-665-4899 | RESISTOR, VARIABLE R27 150,000 OHM..... PORMLOPCT 2 W RV4NAYS0154A (81349) | EA | 1 | | | | | | | 3 | 9 | R27 | |
| PAHZ | 5960-691-7101 | SEMI-CONDUCTOR DEVICE, DIODE CR1..... IN198 (81350) | EA | 2 | | | | | | | 3 | 9 | CR1 | |
| PAHZ | 5960-691-7101 | SEMI-CONDUCTOR DEVICE, DIODE CR2..... IN198 (81350) | EA | REF | | | | | | | 3 | 10 | CR2 | |
| PAHZ | 5960-811-4842 | SEMI-CONDUCTOR DEVICE, DIODE CR3..... M500 (84970) | EA | 1 | | | | | | | 3 | 9 | CR3 | |
| PAHZ | 5935-605-7242 | SHIELD, ELECTRICAL CONNECTOR E13..... METALLIC RECTANGULAR 7-250 IN LG X 1-890 IN W X 1-594 IN H C3040BC155 (81223) | EA | 1 | | | | | | | 10 | | E13 | |

SECTION II

TM11-6625-5246-40P

| SMR CODE | FEDERAL STOCK NUMBER | DESCRIPTION REFERENCE NUMBER & MFR CODE | UNIT OF MEAS | QTY INC IN UNIT | 30-DAY DS MAINT ALLOWANCE | | | 30-DAY CS MAINT ALLOWANCE | | | 1 YR ALN PER 100 EQUIP CNTGCT | DEPOT MAINT ALN PER 100 EQUIP | ILLUSTRATION | |
|-------------|----------------------------|--|--------------------|--------------------------|------------------------------|-------|--------|------------------------------|-------|--------|---|---|--------------|------------|
| | | | | | (a) | (b) | (c) | (a) | (b) | (c) | | | (a) | (b) |
| | | | | | 1-20 | 21-50 | 51-100 | 1-20 | 21-50 | 51-100 | | | FIGURE NO | ITEM NO |
| PAWZZ | 5960-272-9094 | SHIELD, ELECTRON TUBE TS102UQ2 (81350) | EA | 1 | | | | * | * | * | | 17 | 10 | F11 |
| PAWZZ | 5960-264-3004 | SHIELD, ELECTRON TUBE TS103UQ2 (81350) | EA | 1 | | | | * | * | * | | 10 | 10 | F10 |
| PAWZZ | 5935-063-5789 | SOCKET, ELECTRON TUBE TS101P01 (81350) | EA | 1 | | | | * | * | * | | 3 | | XE1 |
| PAWZZ | 5935-260-0516 | SOCKET, ELECTRON TUBE TS102P01 (81350) | EA | 1 | | | | * | * | * | | 3 | 9 | XV2 |
| PAWZZ | 5935-160-1365 | SOCKET, ELECTRON TUBE TS103P01 (81350) | EA | 1 | | | | * | * | * | | 3 | 9 | XV1 |
| PAWZZ | 5930-259-8247 | SWITCH, PUSH S3 SPST 125 V, 3 AMP ... SOLDER LUG TYPE 3-4 IN LG X 5-8 IN DIA 8440K2 (27191) | EA | 1 | | | | * | * | * | | 5 | 9 | S3 |
| PAWZZ | 5933-577-0173 | SWITCH, ROTARY S1 3 SECT 3 POLES, 8... THROWS 1 5-8 IN LG X 1 5-16 IN H X 1 1-4 IN W C3040BA117A (81223) | EA | 1 | | | | * | * | * | | 5 | 9 | S1 |
| PAWZZ | 5930-655-1508 | SWITCH, TOGGLE S2..... | EA | 2 | | | | * | * | * | | 5 | 9 | S2 |
| PAWZZ | 5930-655-1508 | MS25100-23 (81349) | EA | REF | | | | * | * | * | | 5 | | S4 |
| PAWZZ | 5950-578-5548 | SWITCH, TOGGLE S4..... MS25100-23 (81349) TRANSFORMER, POWER, STEP-DOWN AND STEP-UP T1 115 V 60 CYC. 1 PH. PRI 125 V, 6.5 V SECONDARY 2 5-16 IN LG X 2 IN H X 1 7-8 IN W 79MP5 (94653) | EA | 1 | | | | * | * | * | | 3 | 9 | T1 |

SECTION III

TM11-6625-246-40P

| (1) SMR CODE | (2) FEDERAL STOCK NUMBER | (3) DESCRIPTION REFERENCE NUMBER & MFR CODE USABLE ON CODE | (4) UNIT OF MEAS | (5) QTY INC IN UNIT | (6) 30-DAY DS MAINT ALLOWANCE | | | (7) 30-DAY GS MAINT ALLOWANCE | | | (8) 1-YR ALY PER 100 EQUIP CNTGCT | (9) DEPOT MAINT ALY PER 100 EQUIP | (10) ILLUSTRATION | |
|--------------------|-----------------------------------|--|---------------------------|---------------------------------|-------------------------------------|-------|--------|-------------------------------------|-------|--------|--|--|----------------------|-------------|
| | | | | | (a) | (b) | (c) | (a) | (b) | (c) | | | (a) | (b) |
| | | | | | 1-20 | 21-50 | 51-100 | 1-20 | 21-50 | 51-100 | | | FIGURE NO | ITEM NO. |
| PAHZZ | 5120-608-1808 | WRENCH, SOCKET HEAD SCREW NO-REF-DESIG... SPINDLE TYPE L TYPE HANDLE 6 (71159) | EA | 1 | | | | | | | | 10 | 1 | |

INDEX - FEDERAL STOCK NUMBER AND REFERENCE NUMBER
CROSS-REFERENCE TO FIGURE AND ITEM NUMBER

| STOCK NUMBER | FIGURE NO. | ITEM NO. | STOCK NUMBER | FIGURE NO. | ITEM NO. |
|-----------------------|------------|----------|----------------------|------------|----------|
| 5120-333-9809 | E | MP14 | 5913-823-10068 | 9 | C11 |
| 5120-687-0294 | E | MP13 | 5910-823-1948 | E9 | C1 |
| 5120-608-1808 | E | | 5920-196-9230 | | XF1 |
| 5340-205-5159 | | | 5920-578-2837 | E9 | F1 |
| 5340-291-3650 | | H9 | 5920-578-2844 | | F18 |
| 5340-579-7698 | | | 5930-259-8247 | 9 | S3 |
| 5340-508-6284 | | H7 | 5933-577-0173 | 9 | S1 |
| 5355-579-2314 | E | H5 | 5930-255-1508 | | S4 |
| 5355-579-2315 | E | H7 | 5430-655-1508 | 9 | S2 |
| 5355-579-3315 | E | H4 | 5935-063-5789 | | XE1 |
| 5355-582-2766 | E | H2 | 54334-149-40696 | | PS |
| 5905-195-2786 | 9 | R38 | 5935-149-4066 | | P6 |
| 5905-185-8510 | | R26 | 5935-160-1365 | 9 | XW1 |
| 5905-192-0390 | | R1 | 5935-201-8511 | E9 | J2 |
| 5905-192-0390 | 9 | R22 | 5935-201-5983 | E9 | J1 |
| 5905-192-0390 | 9 | R27 | | | P3 |
| 5906-221-5860 | E9 | R21 | 5935-201-8358 | | P4 |
| 5905-249-3661 | E9 | R32 | 5935-236-8292 | E9 | J3 |
| 595-252-4018 | 9 | R23 | 4935-260-0516 | 9 | XV2 |
| 5905-256-0409 | E9 | R31 | 5935-283-3392 | | P1 |
| 5905-279-1723 | 9 | R29 | 4915-324-8792 | | R2 |
| 5905-279-1883 | E9 | R16 | 5935-605-7242 | | F13 |
| 5905-279-2603 | | R35 | 5335-666-4860 | | MP16 |
| 5905-279-2603 | 9 | R34 | 5940-204-5206 | | E3 |
| 5905-279-3503 | E9 | R25 | 5940-204-5206 | | E18 |
| 5905-279-3504 | E9 | R30 | 5940-244-5745 | | MP9 |
| 5905-539-0802 | 9 | R5 | 5940-263-1056 | | MP11 |
| 5905-552-2442 | 9 | R33 | 5950-578-1462 | | L4 |
| 5905-556-4008 | E9 | R15 | 5950-578-1462 | 9 | L1 |
| 5905-556-4627 | E9 | R10 | 5953-578-1462 | 9 | L2 |
| 5905-477-9490 | 9 | R13 | 5950-578-1462 | E9 | L3 |
| 5905-581-1717 | E9 | R12 | 4950-578-5548 | 9 | T1 |
| 5905-581-1717 | E9 | R14 | 5960-166-7663 | E9 | V1 |
| 5905-646-5706 | 9 | R7 | 5960-188-3551 | E9 | V2 |
| 5905-695-4063 | E9 | R11 | 5963-264-3004 | E9 | E10 |
| 5905-664-74899 | 9 | R27 | 5963-272-9094 | E9 | F11 |
| 5905-800-8030 | E9 | R9 | 5960-691-7101 | 9 | C11 |
| 5905-817-5636 | 9 | R19 | 5960-691-7101 | E9 | C12 |
| 5905-817-5636 | E9 | R24 | 5960-811-4842 | 9 | R13 |
| 5905-822-3841 | 9 | R2 | 5975-273-0780 | | MP3 |
| 5905-853-5897 | E9 | R17 | 5975-351-6114 | | MP4 |
| 5905-853-5897 | E9 | R18 | 5975-578-2864 | | MP5 |
| 5905-853-5898 | 9 | R4 | 6145-542-6092 | | |
| 5905-853-5899 | E9 | R9 | 6145-548-2742 | 1 | |
| 5905-853-5932 | 9 | R6 | 6145-578-6370 | | |
| 5905-853-5933 | 9 | R3 | 6625-331-1741 | 1 | F7 |
| 5910-112-7908 | 9 | C4 | 6625-519-2411 | 9 | M1 |
| 5910-276-6835 | 9 | C5 | 6625-578-5517 | 1 | F12 |
| 5910-276-6835 | E9 | C8 | 6625-579-2304 | | MP1 |
| 5910-578-5542 | E9 | C6 | 6625-605-7196 | | H9 |
| 5910-583-4099 | 9 | C14 | 6625-605-7196 | | H11 |
| 5910-583-4891 | 9 | C7 | 6625-605-7197 | | H18 |
| 5910-667-7062 | E9 | C12 | 6625-635-7226 | | E4 |
| 5310-872-5683 | 9 | C2 | 6625-635-7226 | | F5 |
| 5910-822-5683 | E9 | C3 | 6625-608-1809 | 1 | MP21 |
| 5910-822-5683 | E9 | C9 | 6625-678-4330 | 1 | F6 |
| 5910822-5683 | E9 | C13 | | | |

| REFERENCE NO. | MFR CODE | FIG. NO. | ITEM NO. | REFERENCE NO. | MFR CODE | FIG. NO. | ITEM NO. |
|---------------|----------|----------|----------|---------------|----------|----------|----------|
| A43057-6 | 02660 | | MP16 | C415C101J | 81349 | E9 | C8 |
| A43102A18-BP | 02660 | E9 | J3 | CPC1949-6 | 71616 | | MP9 |
| A43106A18-85 | 02660 | | P3 | C005A1EC104K | 81349 | E9 | C12 |
| A43106A18-85 | 02660 | | P4 | C30408A1000-1 | 81223 | 1 | H3 |
| C020C4220J | 81349 | 9 | C7 | C30408A1000-1 | 81223 | 1 | H4 |
| C030C447-J | 81349 | 9 | C4 | C30408A1000-2 | 81223 | 1 | H5 |
| C042C00M | 81349 | 9 | C14 | C30408A1000-3 | 81223 | 1 | H2 |
| CK62AW477M | 81349 | 9 | C11 | C30408A117A | 81223 | 9 | S1 |
| CK62AW472M | 81349 | E9 | C1 | C30408A101A | 81223 | 1 | F12 |
| CK63AW103M | 81349 | 9 | C7 | C30408B113 | 81223 | | MP1 |
| CK63AW103M | 81349 | E9 | C4 | C30408B138 | 81223 | | H9 |
| CK63AW103M | 81349 | E9 | C9 | C30408B138 | 81223 | | H11 |
| CK63AW103M | 81349 | E9 | C13 | C30408B145 | 81223 | | L4 |
| C415C101J | 81349 | 9 | C5 | C30408B145 | 81223 | 9 | L1 |

SECTION IV

TM11-6625-246-40P

| REFERENCE N_O . | MFR CODE | FIG. NO. | ITEM N_O . | REFERENCE Text | MFR CODE | FIG. NO. | ITEM N_O . |
|--------------------|-------------|-------------|---------------|-------------------|-------------|-------------|---------------|
| C304088145 | 81223 | 9 | L2 | TS101P01 | 81350 | | F11 |
| C304088145 | 81223 | 10 | L3 | TS102P01 | 81350 | 9 | AV2 |
| C304088148 | 80211 | | | TS102U02 | 81350 | 10 | F11 |
| C334788163 | 81223 | | F4 | TS103P01 | 81350 | 9 | AV1 |
| C304088163 | 81223 | | F5 | TS103U02 | 81350 | 10 | F10 |
| C304088155 | 81223 | | F13 | UC290AU | 80058 | 10 | J2 |
| C304088136 | 81223 | 1 | F6 | UG291B | 80058 | 10 | J1 |
| C331881002A | 81223 | | H18 | UG88CU | 80058 | | P5 |
| MS25100-23 | 81349 | | S4 | UG88CU | 80058 | | P6 |
| MS25100-23 | 81349 | 9 | S2 | WKT7336 | 26954 | | |
| M500 | 84970 | 9 | R23 | 06-30095A01 | 80211 | 9 | R3 |
| RC20GF102A | 81349 | 9 | R19 | 06-30095A02 | 81223 | 9 | R2 |
| RC20GF102K | 81349 | 10 | R24 | 06-30095A03 | 81223 | 9 | R4 |
| RC20GF103J | 81349 | | R26 | 06-30095A05 | 81223 | 9 | R6 |
| RC20GF105J | 81349 | | R1 | 06-30095A10 | 81223 | 10 | R9 |
| RC20GF105J | 81349 | 9 | R22 | 06-30095A10 | 81223 | 10 | R17 |
| RC20GF105J | 81349 | 9 | R29 | 06-30095A10 | 81223 | 10 | R18 |
| RC20GF221K | 81349 | 10 | R31 | 1N198 | 81350 | 9 | CR1 |
| RC20GF334K | 81349 | 10 | R21 | 1N198 | 81350 | 10 | CR2 |
| RC20GF335K | 81349 | 10 | R16 | 12A07 | 99813 | 10 | V1 |
| RC20GF470J | 81349 | 9 | R23 | 14-20P | 28281 | | P2 |
| RC20GF472J | 81349 | 10 | R30 | 18 | 70485 | | H9 |
| RC20GF474K | 81349 | 9 | R38 | 29 | 55026 | 9 | H1 |
| RC20GF682K | 81349 | 10 | R25 | 3F | 72307 | | MP11 |
| RC20GF683J | 81349 | 10 | R32 | 372001 | 75915 | | XF1 |
| RC32GF222K | 81349 | 9 | R20 | 372001SA2 | 75915 | | F18 |
| RC32GF471K | 81349 | | R35 | 387B | 11242 | 1 | C7 |
| RC32GF471K | 81349 | 9 | R34 | 488 | 98427 | 1 | MP14 |
| RG58U | 80058 | | | 6AK6 | 99813 | 10 | V2 |
| RN70B1003F | 81349 | 9 | P33 | 60CS | 76545 | | F3 |
| RN70B1502F | 81349 | 10 | R12 | 60CS | 76545 | | F18 |
| RN70B1502F | 81349 | 10 | R14 | 717A | 98427 | 1 | MP13 |
| RN70B2002F | 81349 | 10 | R10 | 7652CR0 | 15814 | 1 | MP21 |
| RN70B2003F | 81349 | 9 | R7 | 794P5 | 94653 | 9 | T1 |
| RN70B2004F | 81349 | 9 | R5 | 8 | 71159 | 1 | |
| RN70B4002F | 81349 | 10 | R15 | 8AG1-200 | 71400 | 10 | F1 |
| RV4NA XSD253A | 81349 | 10 | R11 | 8440K2 | 27191 | 9 | S3 |
| RV4NA XSD502A | 81349 | 9 | R13 | 868-2 | 70485 | | H7 |
| RV4NA XSD154A | 81349 | 9 | R27 | 8898 | 70902 | 1 | |
| P459G2R5 | 81349 | 10 | R8 | 8898 | 70903 | | |
| SR3P1 | 28520 | | MP5 | 9M11 | 74970 | 10 | C6 |
| SR5P1 | 28520 | | MP4 | 921 | 97539 | | P1 |
| SR6P1 | 28520 | | MP3 | | | | |

By Order of the Secretary of the Army:

CREIGHTON W. ABRAMS
General, United States Army
Chief of Staff

Official:

VERNE L. BOWERS
Major General, United States Army
The Adjutant General

Distribution:

To be distributed **accordance** with DA Form **12-50**, Section II, Direct and General Support **requirements** for **AN/FRC-15**, AN/FRC-27, and AN/FRC-28 and DA Form 12-51, Direct and Support **Maintenance** requirements for **AN/TRC-22**, AN/TRC-28, AN/TRC-34. AN/VRC-6 and

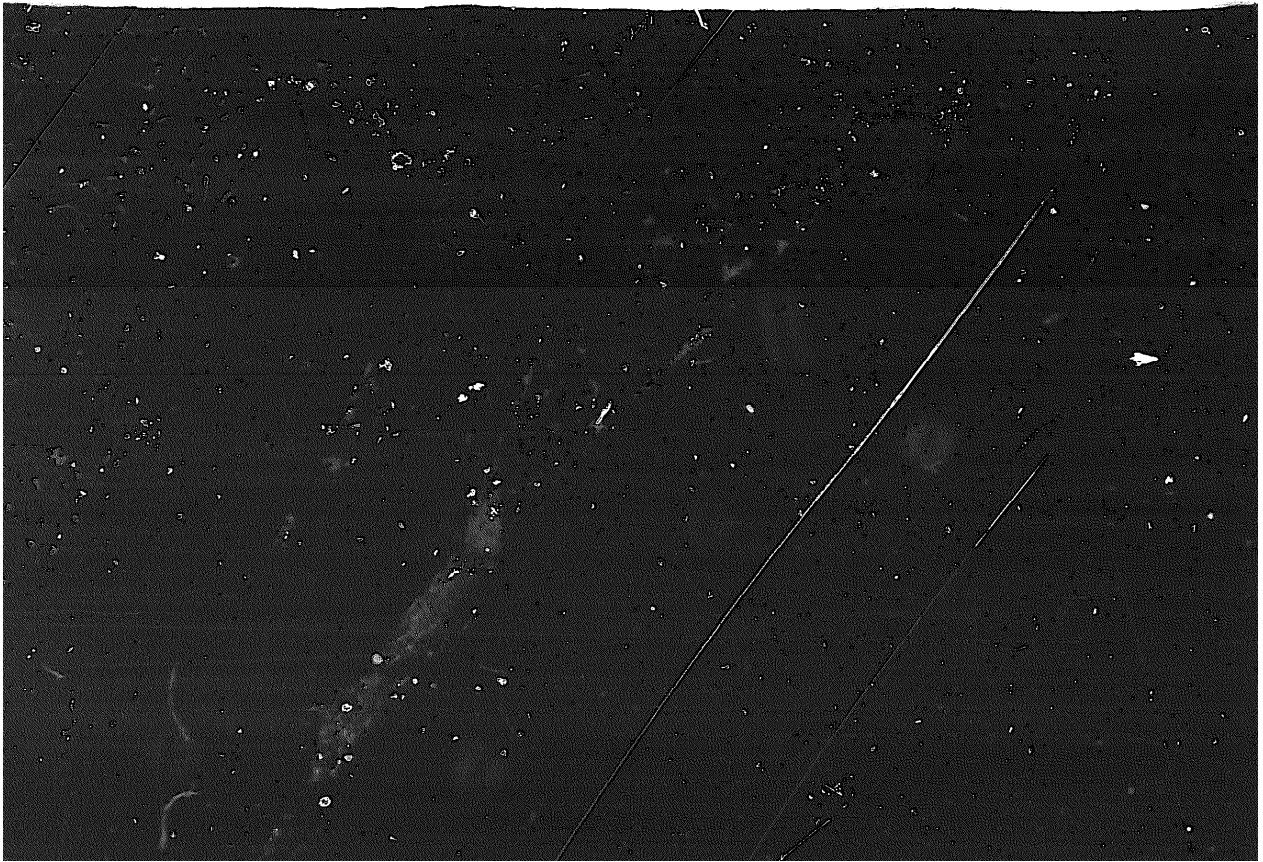
★ U.S. GOVERNMENT PRINTING OFFICE 1973 768105/114

END

12-25-82

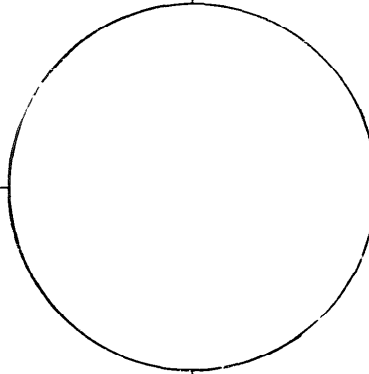
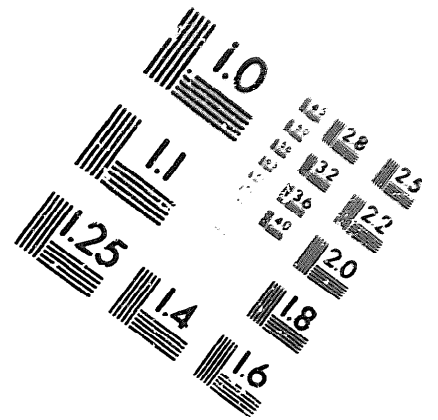
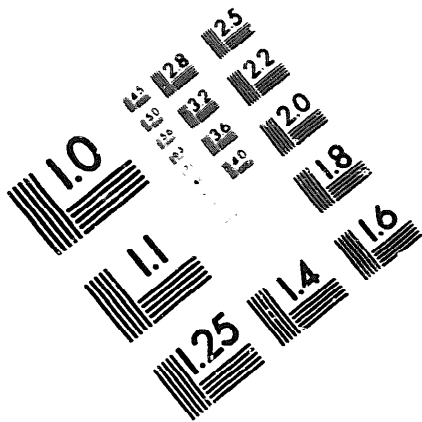
DATE





DEPARTMENT OF THE ARMY

MICROFORM
TEST TARGET



150 MM

1.0 mm (e= 81 mm)

ABCDEFGHIJKLMNQRSTUUVWXYZ1234567890
abcdefghijklmnopqrstuvwxyz\$%&/'%# 1/2 1/4 3/4 — = + x & @ *

1.5 mm (e= 1.09 mm)

ABCDEFGHIJKLMNQRSTUUVWXYZ1234567890
abcdefghijklmnopqrstuvwxyz\$%&/'%# 1/2 1/4 3/4 — = + x & @ *

2.0 mm (e= 1.37 mm)

ABCDEFGHIJKLMNQRSTUUVWXYZ
abcdefghijklmnopqrstuvwxyz
1234567890\$%&/'%# 1/2 1/4 3/4 — = + x & @ *

2.5 mm (e= 1.77 mm)

ABCDEFGHIJKLMNQRSTUUVWXYZ
abcdefghijklmnopqrstuvwxyz
1234567890\$%&/'%# 1/2 1/4 3/4 — = + x & @ *

1.0 mm (e= 81 mm)

ABCDEFGHIJKLMNQRSTUUVWXYZ1234567890
abcdefghijklmnopqrstuvwxyz\$%&/'%# 1/2 1/4 3/4 — = + x & @ *

1.5 mm (e= 1.09 mm)

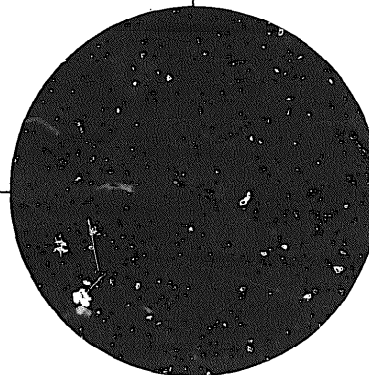
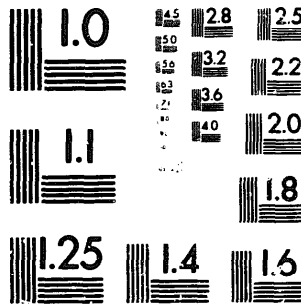
ABCDEFGHIJKLMNQRSTUUVWXYZ1234567890
abcdefghijklmnopqrstuvwxyz\$%&/'%# 1/2 1/4 3/4 — = + x & @ *

2.0 mm (e= 1.37 mm)

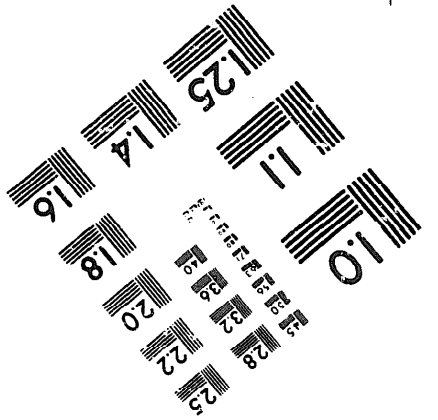
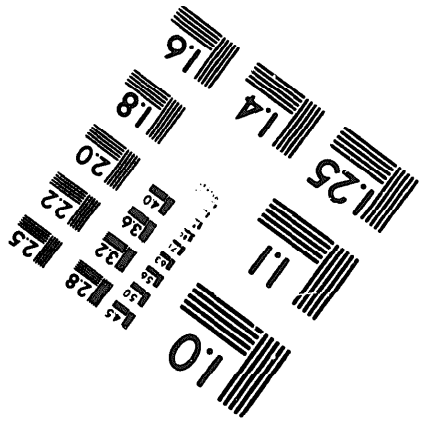
ABCDEFGHIJKLMNQRSTUUVWXYZ
abcdefghijklmnopqrstuvwxyz
1234567890\$%&/'%# 1/2 1/4 3/4 — = + x & @ *

2.5 mm (e= 1.77 mm)

ABCDEFGHIJKLMNQRSTUUVWXYZ
abcdefghijklmnopqrstuvwxyz
1234567890\$%&/'%# 1/2 1/4 3/4 — = + x & @ *



200 MM



250 MM